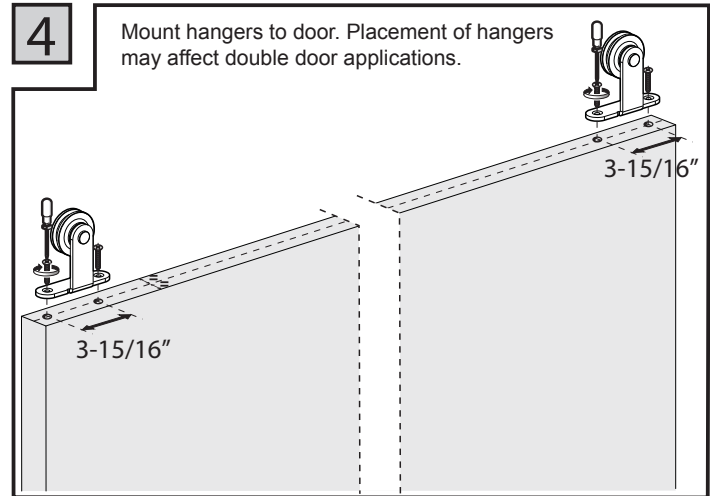
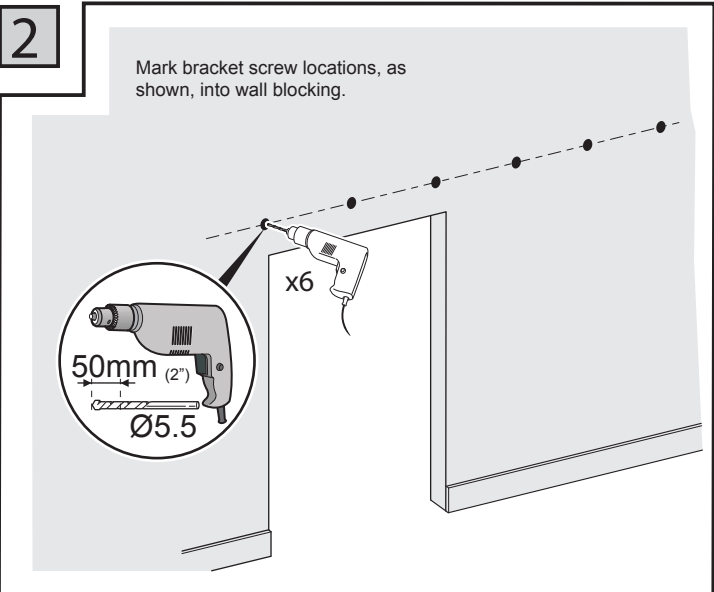
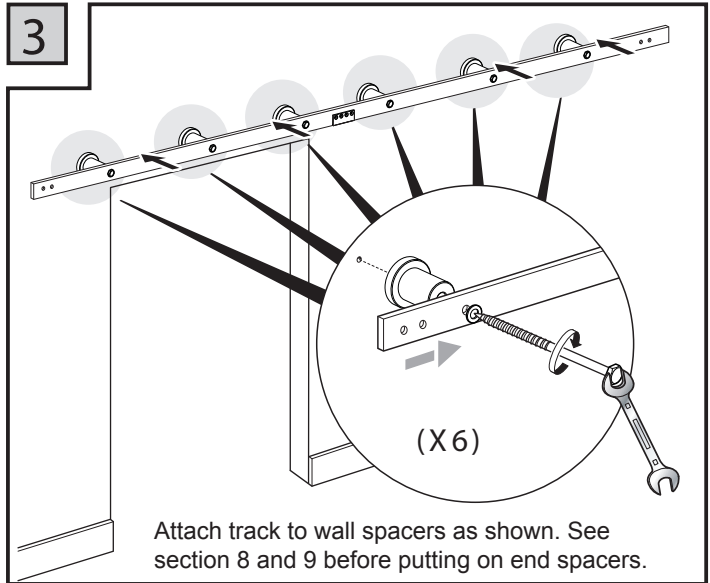
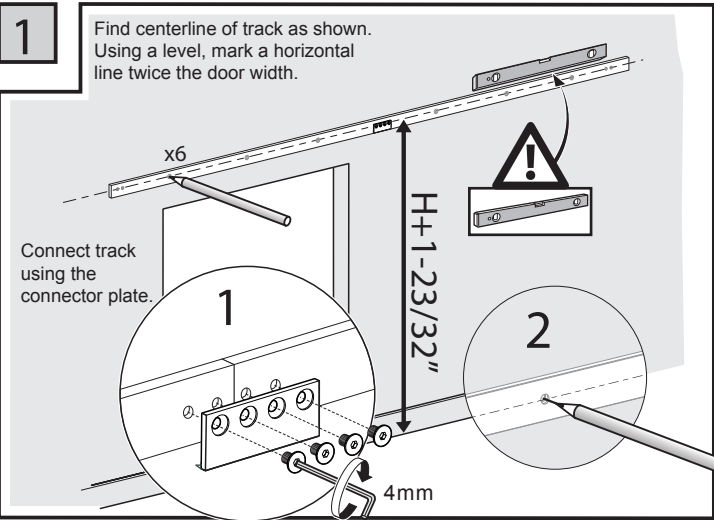
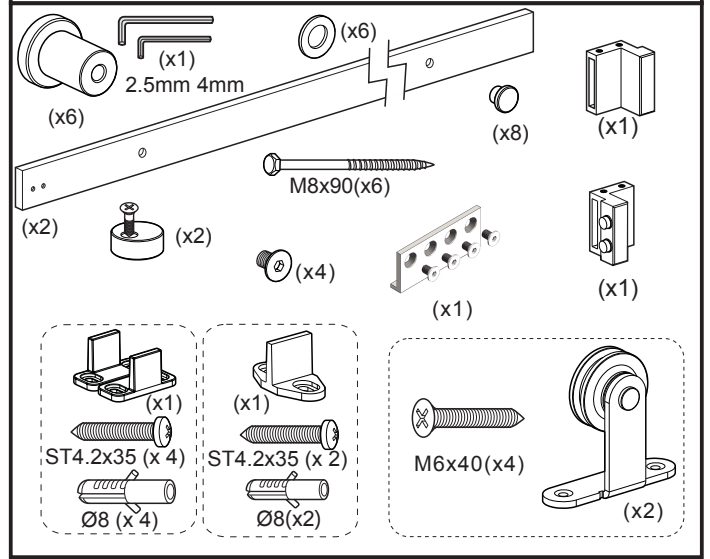
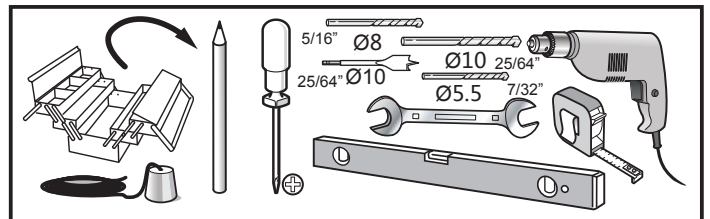
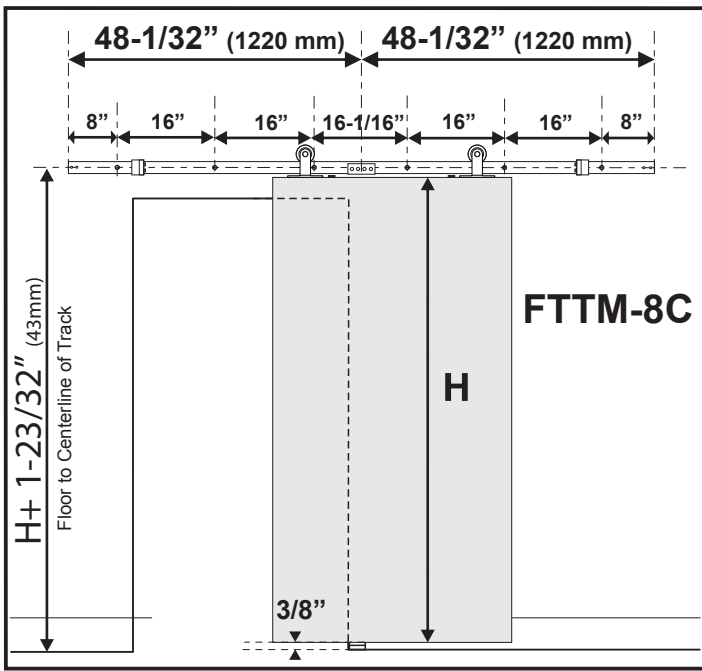
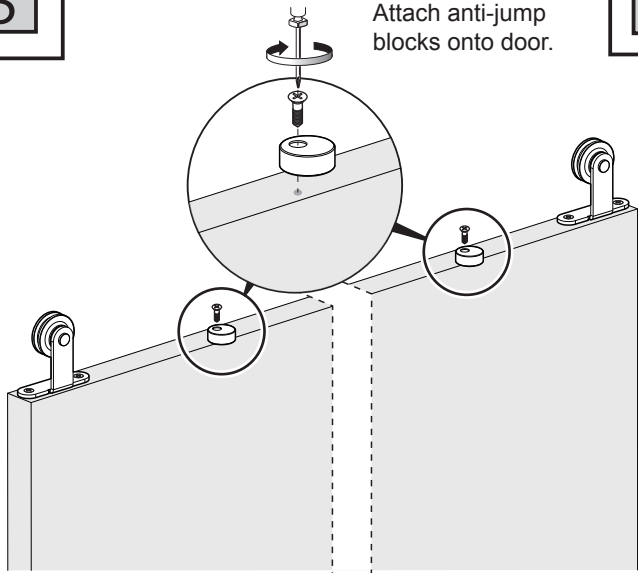


FTTM-8C INSTALLATION INSTRUCTIONS

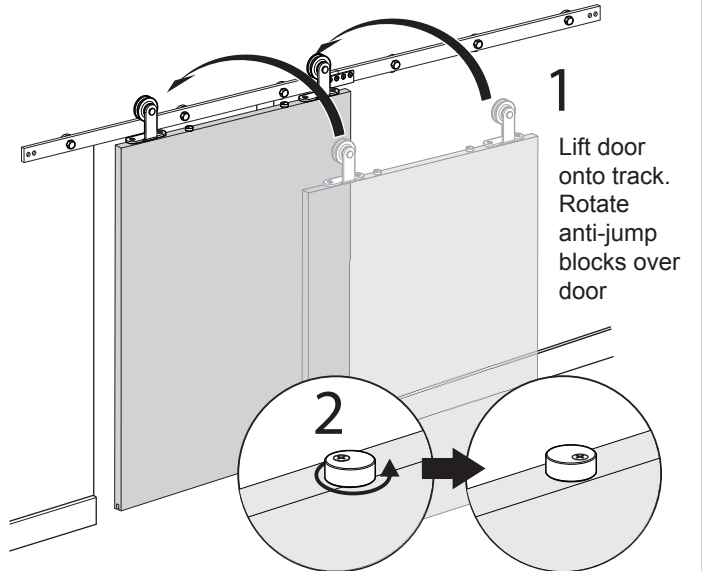


5

Attach anti-jump blocks onto door.



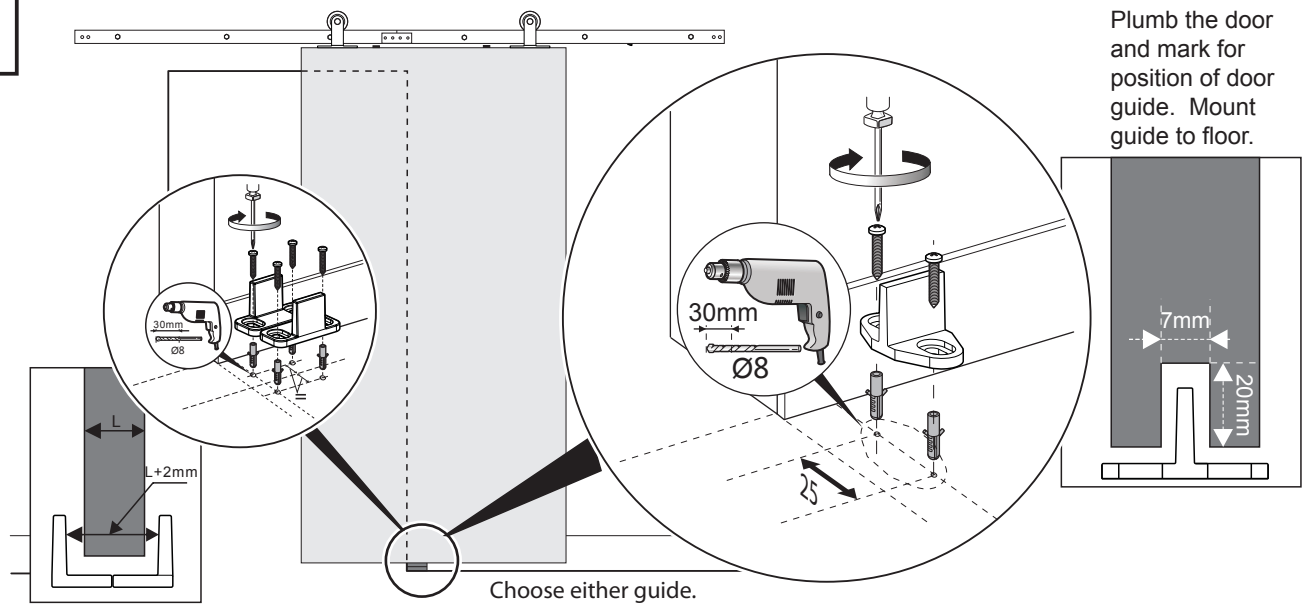
6



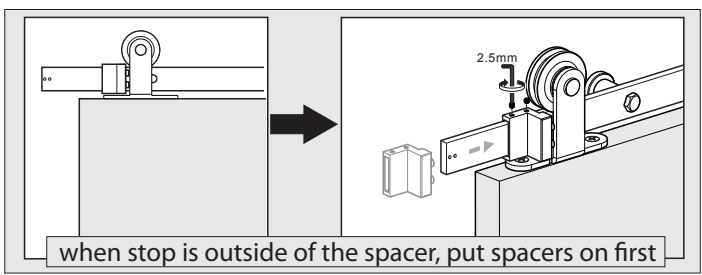
1 Lift door onto track. Rotate anti-jump blocks over door

7

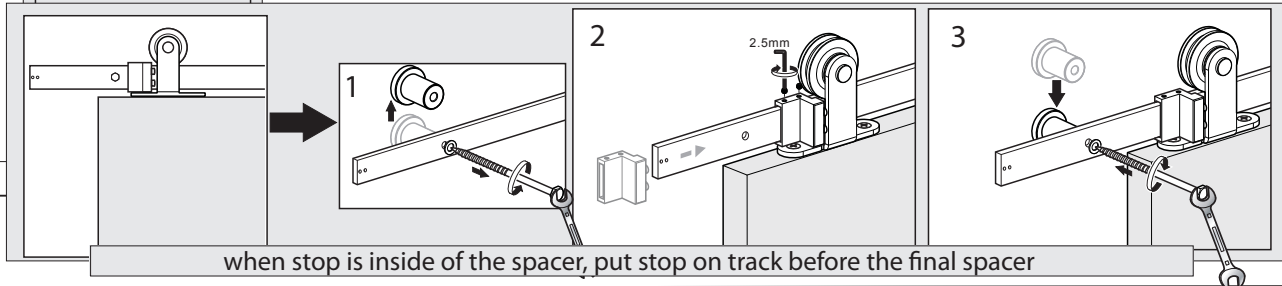
Plumb the door and mark for position of door guide. Mount guide to floor.



8



when stop is outside of the spacer, put spacers on first



when stop is inside of the spacer, put stop on track before the final spacer

